

AspenPro Water Softening System

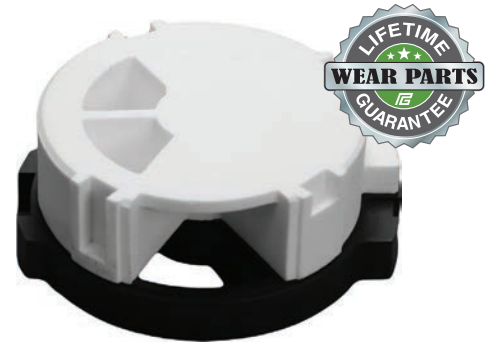
An Environmentally-friendly, Sustainable Solution with a Lifetime Guarantee

AspenPro is the only system on the market whose solid, internal actuators are designed to stay in service forever! It's the customer's choice for high performance, the Earth's choice for sustainability, and the contractor's choice for low-maintenance operation.

The Secret is Inside

AspenPro features the most robust valve on the market, with superior construction and features. It's designed to stay in service and out of the landfill.

- **Made of Corundum ceramic and graphene** (200x stronger than steel!) with no wear parts to service or replace
- **Hermetically sealed parts** for impregnable resistance to corrosion, wear, or tear
- **Maintenance-free actuators**
- **Lifetime guarantee on internal ceramic and graphene parts**



Smart Controls Increase Efficiency

- Bright, easy-to-read LCD display
- Permanent program function memory
- Memory backup (for power outages)
- External control not required for multiple system configurations or external devices
- Programmable in English, Spanish, Chinese, and French
- Options to minimize water usage, including:
 - Pre- and post- backwash and brine fill
 - Meter and timer capabilities
 - Maximum day override
 - External brine motor
 - External device control with additional relay
 - Remote handling port for regeneration input
 - Programmable company info for end user use



Water Softening for the Next Generation

Designed with the Earth and the customer in mind, AspenPro uses a metered environmentally-friendly regeneration process to conserve water and salt. It outperforms conventional softeners in many ways...

- 50% less salt
- 25% less water
- 100% fewer wear parts to replace
- 100% fewer spare parts in the landfill



For more information on the AspenPro Water Softening System, contact Pargreen today for the dealer nearest you.

AspenPro Water Softening System



AspenPro System Specifications

Efficiency

Model*	Resin Cubic Feet	Overall Height Inches	Diameter Inches	Flow Rate Gallons Per Minute ₁	Water (Gallons) Used Per Regeneration ₂	Grains Exchanged Per lb. Salt
SSG48	1	54.7	9	8.9	58	3,000
SSG54	1.5	60.9	10	10.9	71	3,000
SSG52	2	59.0	12	15.7	102	3,000
SSG1354	2.5	61.4	13	15.7	120	3,000

* Additional Sizes Available

1 - Flow Rate at 25 PSI Drop

2 - Usage Based on Water Supply Quality; Usage ± 25%

Electrical / Operational Specifications

Control Valve		Working Conditions	
Transformer Input	120VAC - 60Hz	Water Pressure	20 -120 PSI
Transformer Output	12VDC - 2A	Water Temperature	35°F - 125°F
Valve Wattage	24W	Hardness Level ₃	3 to 50 Grains

3 - For Water Hardness Over 50 Grains, Contact PWT Technical Support

Control Valve Parameters

Inlet	Outlet	Drain ₄	Brine Line	Base	Riser Tube	Hard Water Bypass
1"	1"	1/2" Barb	3/8"	2.5" - 8NPSM	1.05"	Yes - During Regeneration

4 - Drain Connection Also 3/4" MNPT

Additional Specifications

Valve Material	Tank Material	Meter Accuracy	Clock
Noryl®	FRP	± 5%	12 Hour - with Battery Back-up